

SERIES OTH

**PARTS
AND
OPERATOR
MANUAL**

**ORCHARD
TANDEM
DISC
CUTTING
WIDTHS
11'1"
To
16'11"**

Domries Enterprises, Inc

12281 Rd 29

Madera, California 93638

Phone (559) 673-9143 Fax (559) 673-4110

Visit our Web-Site at www.domries.com



Safety Precautions

**ATTENTION! BECOME ALERT!
YOUR SAFETY IS INVOLVED!**

This symbol is used to call your attention to safety precautions. That should be followed by the operator to avoid accidents. When you see this – Heed Its Warning.

Many hours of lost time and much suffering is caused by the failure to practice simple safety rules.

1. **READ** this manual carefully to acquaint your - self with the Disk Harrow. Opening unfamiliar equipment can cause accidents.
2. **LOWER IMPLEMENT** if possible, when adjusting maintenance work; otherwise **BLOCKS IT SECURELY** at a workable height.
3. When Implement and tractor is parked always lower disk to the ground and place a **FLAG OR OTHER WARNING DEVICE** on each corner as someone could run or bump into the implement.
4. Implement should be **DETACHED ONLY** in an area where Children **DO NOT PLAY**.
5. **DO NOT** wear loose fitting clothing that could catch on various parts.
6. Machinery should be **OPERATED ONLY** by those who are **RESPONSIBLE AND DELEGATED** to do so.
7. **ONLY ONE PERSON** – the operator – should be permitted on the tractor when implement is in operation, he should be thoroughly familiar with tractor and implement.
8. **MAKE CERTAIN** that everyone is clear before starting tractor and implement combination.
9. **BEFORE WORKING** under the any hydraulically controlled unit **MAKE SURE** it is **SECURELY BLOCKED**.
10. The **RATE OF SPEED** on hillsides or curves should be regulated so there is no danger of tipping.
11. **DO Not** drive too close to the edge of a ditch or creek.
12. **REDUCE SPEED** when transporting unit to avoid bouncing and momentary loss of steer ability.
13. **MAKE CERTAIN** tractor is equipped with sufficient front end weight to counter-balance the plow weight and maintain stability of front of tractor.
14. **DO NOT** attempt to operate tractor and implement unless you are in the driver seat.
15. **ALWAYS** place transmission in **PARK or NEUTRAL, LOCK BRAKES, STOP ENGINE AND REMOVE START KEY** before dismounting from the tractor.
16. **NEVER** stand between tractor and disc when hitching.
17. **PROVIDE** a first aid kit. Treat all scratches, cuts, etc. with proper antiseptic immediately.
18. If **DECALS** become damaged or come off, they should be replaced immediately.
19. **REMEMBER** that safe operation is no accident.

ON HIGHWAY OPERATION

1. Use the **SLOW MOVING** vehicle emblem in daytime and approved warning lights at night, or during other periods of poor visibility, to prevent highway accidents.
2. **COMPLY** with Local highway regulation concerning moving machinery on highways.
3. **MAINTAIN** complete Control of machines at all times when traveling on the highway.
4. Due to the width of the implement, **USE EXTRA CAUTION** on highways, far lanes and when approaching gates.

**OTH
SERIES**



**WHEEL TYPE
TANDEM DISC HARROW**



**CUTTING WIDTHS
11'1" TO 16'11"**

DOMRIES ENTERPRISES, INC

12281 Road 29

Madera, California 93638

Office (559) 673-9143 Fax (559) 673-4110

Visit our website @ www.domries.com



OTH-SPECIFICATIONS

MODEL	WIDTH OF CUT	NO. OF BLADES	SIZE BLADES	BLADE EDGE		SPACING		APPROX. REQ. P.T.O. -H.P.	APPROX. WT. LBS.
				FRONT/REAR	FRONT/REAR	FRONT/REAR	FRONT/REAR		
OTH-100-2840	11'1"	28	24"	Smooth	Smooth	9"	9"	60-80	4669
OTH-100-3240	12'6"	32	24"	Smooth	Smooth	9"	9"	65-85	4872
OTH-100-3640	14'0"	36	24"	Smooth	Smooth	9"	9"	75-95	5204
OTH-100-4040	15'5"	40	24"	Smooth	Smooth	9"	9"	85-100	4669
OTH-100-4440	16'11"	44	24"	Smooth	Smooth	9"	9"	95-110	5660

* see price sheet for notched and smooth combinations



HEAVY DUTY AXEL SHAFT



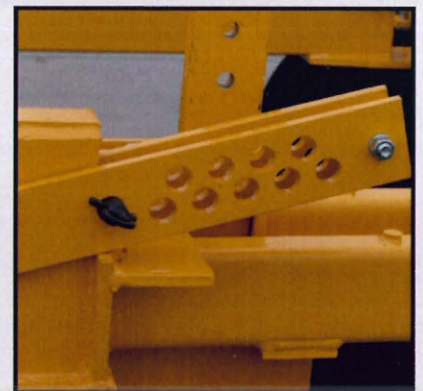
SINGLE TONGUE IS STANDARD
DOUBLE LIP AS AN OPTION

OPTIONS

- BLADE CLEANERS
- UTILITY HITCH
- DRAG BRACKETS
7" OR 16" EXT.
- FRONT DIRT DEFLECTERS
- ADD-A-BLADE EXTENSIONS



MOUNTED TURNBUCKLE
ADJUSTS HITCH TO
TRACTOR HEIGHT.



DEPTH CONTROL

DOMRIES ENTERPRISES, INC

12281 Road 29

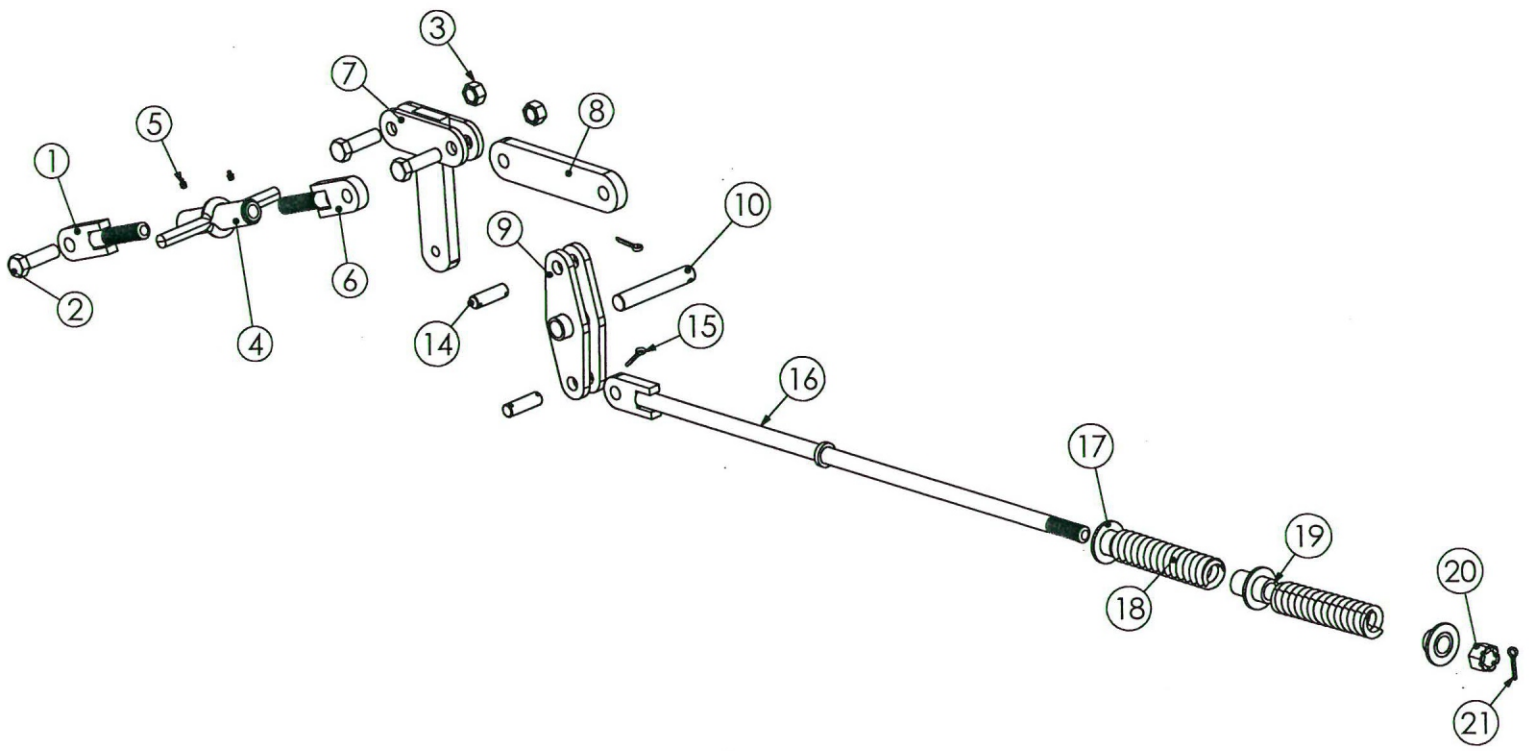
Madera, California 93638

Office (559) 673-9143 Fax (559) 673-4110

Visit our website @ www.domries.com

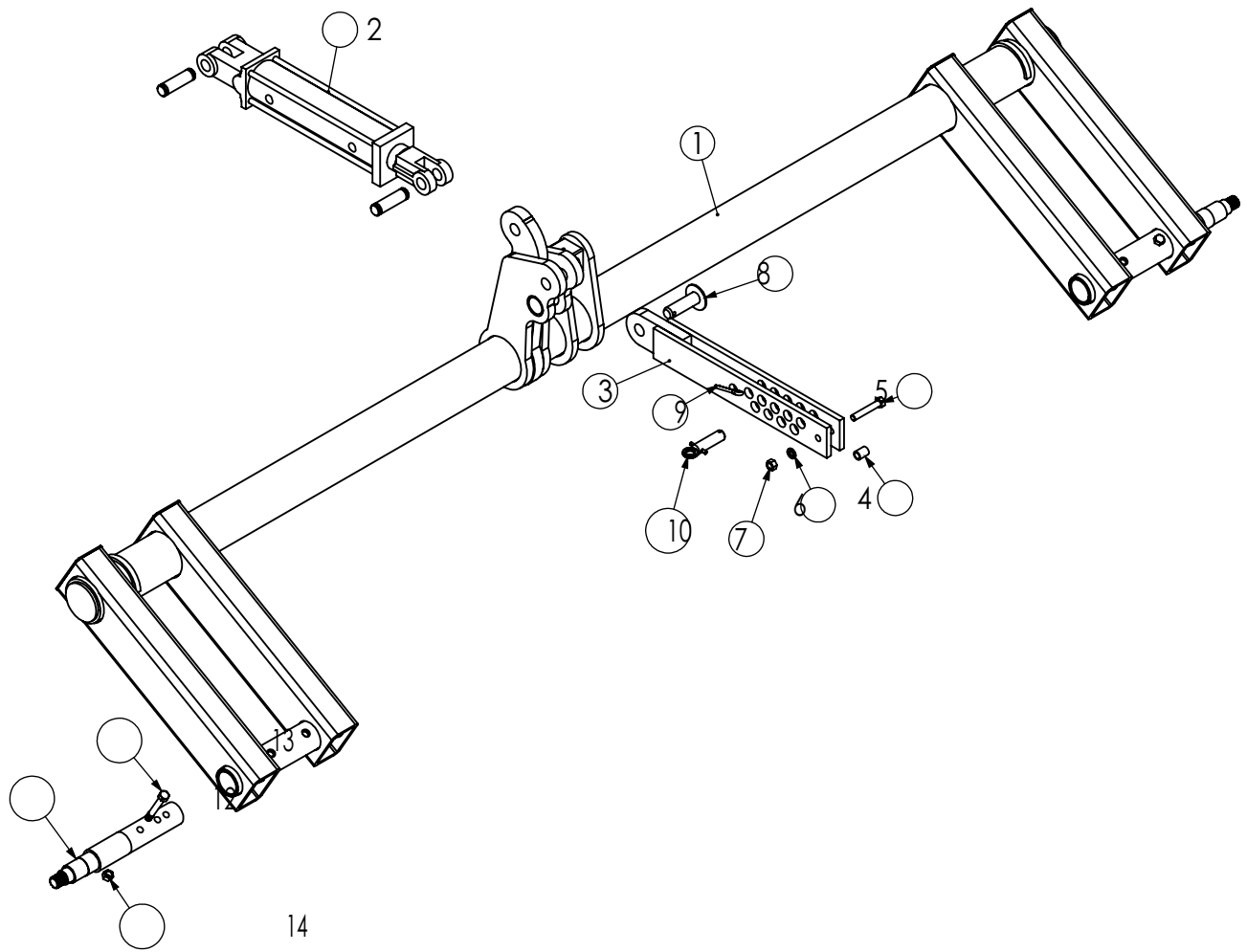


Domries reserves the right to make changes and/or improvements in design and construction of parts and/or machines shown herein without notice or obligation



LEVELING ASSEMBLY

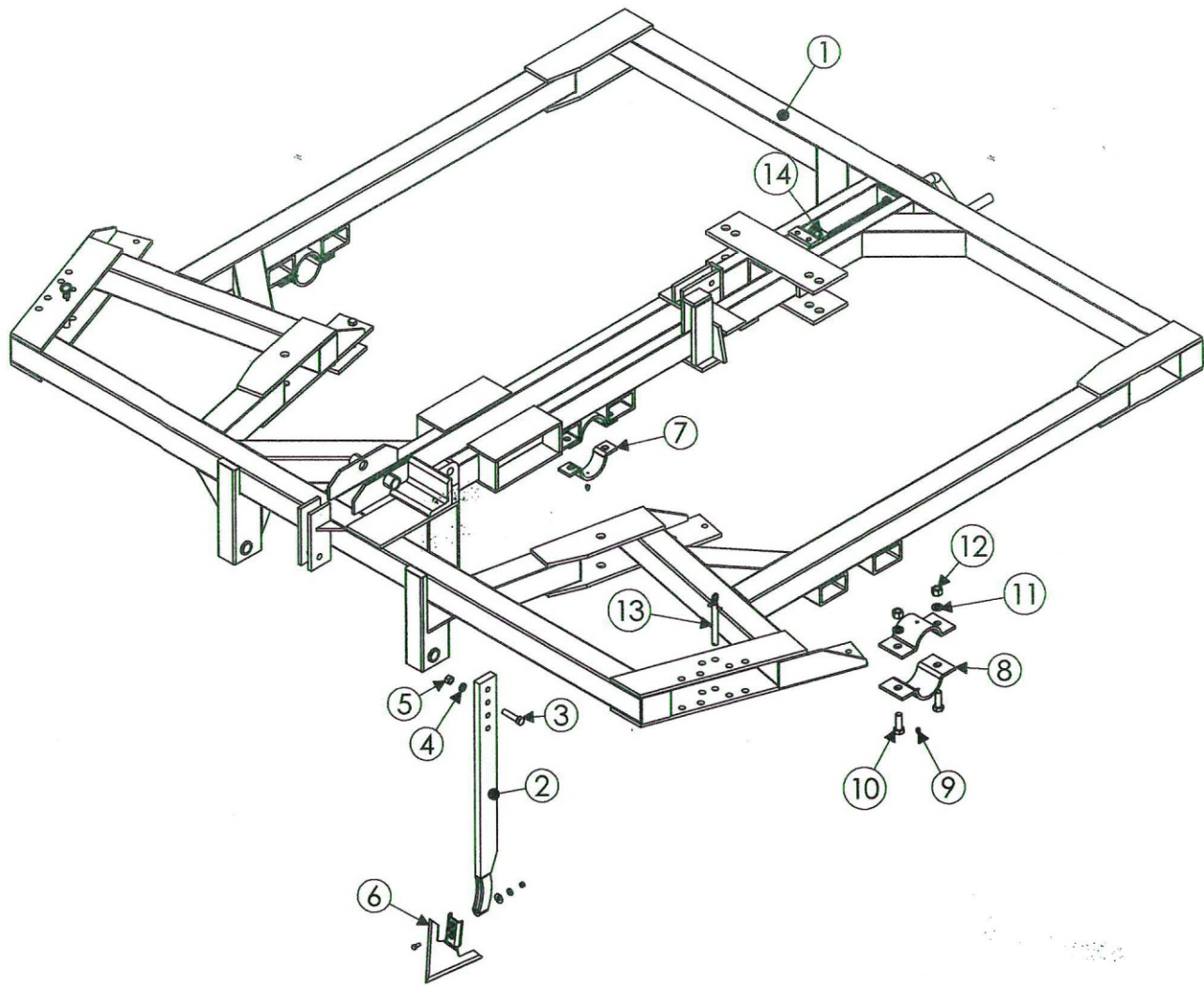
REF. #	PART #	DESCRIPTION	APPROX. WT.
1	OH-140	ROD - TURNBUCKLE L.H.	4.2 LBS.
2	CS1312-5	BOLT - 1' NC. X 3 1/2" LG. GR-5	0.8 LBS.
3	LN1	LOCK NUT - 1"	0.2 LBS.
4	OH-142	BODY - TURNBUCKLE	5.6 LBS.
5	1641	GREASE ZERK	0.1 LBS.
6	OH-143	ROD - TURNBUCKLE R.H.	4.2 LBS.
7	OH-144	HAMMER - LEVELING	17.2 LBS.
8	OH-146	LINK	11.0 LBS.
9	OH-147	ROCKER WELDMENT (SWIVEL)	13.9 LBS.
10	OH-145	PIN - ROCKER	0.7 LBS.
11	CS38214-5	BOLT - 3/8" X 2 1/4" LG. GR-5	0.1 LBS.
12	LW38	LOCK WASHER - 3/8"	0.1 LBS.
13	N38	NUT-3/8"	0.1 LBS.
14	OH-148	PIN - CROSS	2.5 LBS.
15	CP142	COTTER PIN - 1/4" X 2" LG.	0.1 LBS.
16	OH-149	LEVELING ROD	19.0 LBS.
17	OH-152	SPRING GUIDE - SINGLE	0.7 LBS.
18	OH-150	SPRING	5.8 LBS.
19	OH-151	SPRING GUIDE - DOUBLE	1.2 LBS.
20	SN114	SLOTTED NUT - 1 1/4"	0.5 LBS.
21	CP14212	COTTER PIN - 1/4" X 2 1/2" LG.	0.1 LBS.



14

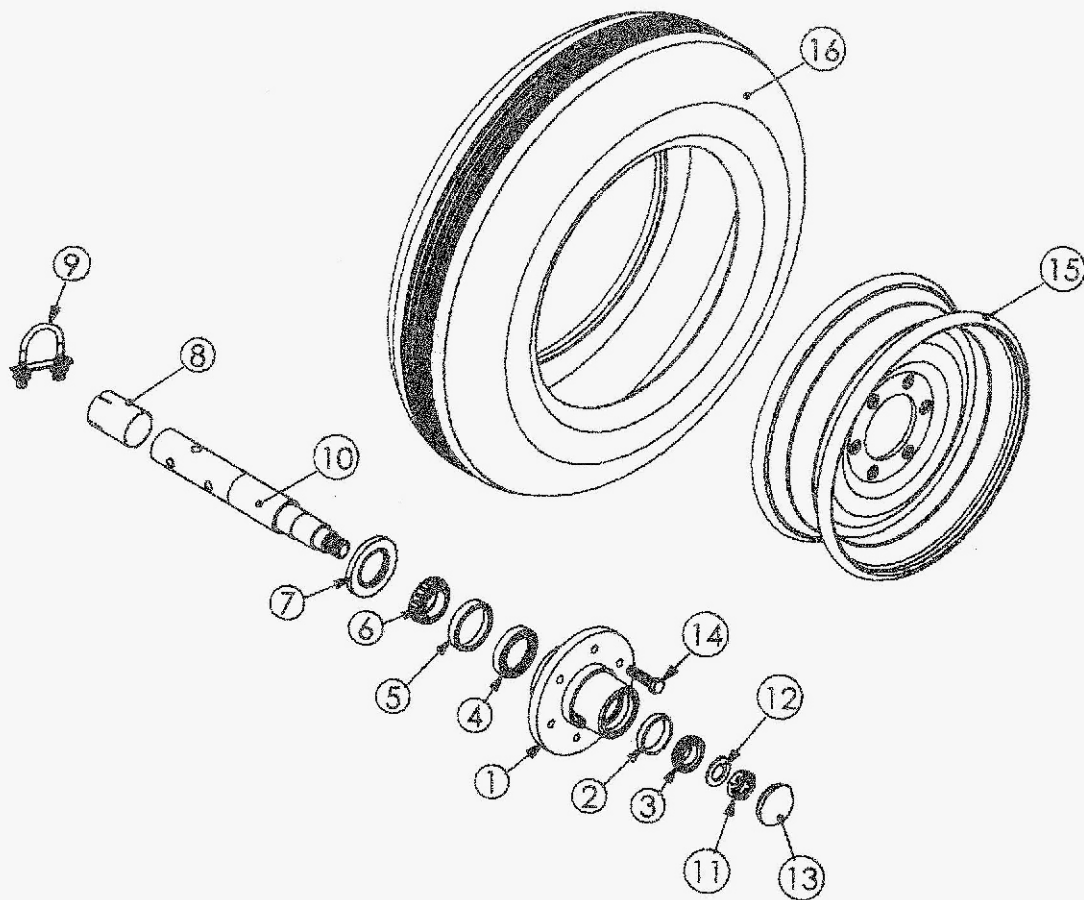
AXLE ASSEMBLY

REF. #	PART #	DESCRIPTION	APPROX. WT.
1	OH-115	AXLE-WELD-Oth	248.0 LBS.
2	OH-172	HYD. CYLINDER - 3 1/2" DIA. X 12" STRK. (W/PINS)	30.0 LBS.
3	OH-125	SET BAR-DEPTH	20.0 LBS.
4	OH-125A	BUSHING SPACER, SET BAR	0.2 LBS.
5	CS12234-5	BOLT - 1/2" NC. X 2 3/4" GR. 5	0.1 LBS.
6	LW12	LOCK WASHER - 1/2"	N/A
7	N12	NUT - 1/2"	0.3 LBS.
8	OH-128	PIN - DEPTH ADJ.	0.1 LBS.
9	HP6	COTTER -HAIR PIN	0.1 LBS.
10	OH-126	PIN - SET BAR	0.6 LBS.
11	CP14212	COTTER PIN - 1/4" X 2 1/2" LG.	0.1 LBS.
12	DSH-312-S	SPINDLE SLIP IN	N/A
13	CS12312-5	BOLT - 1/2" NC. X 3 1/2" LG. GR-5	N/A
14	LN12	LOCK NUT-1/2"	N/A



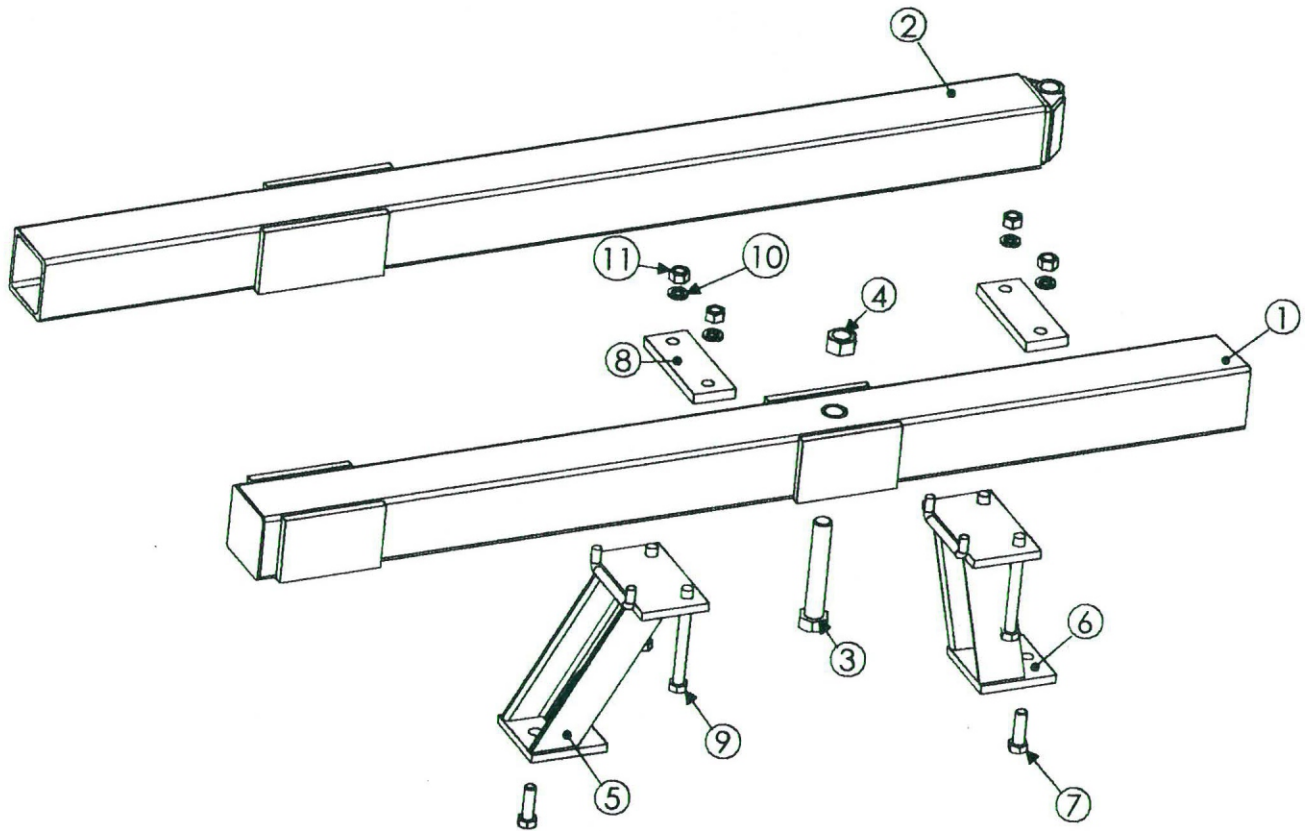
OTH - MAIN FRAME

REF. #	PART #	DESCRIPTION	APPROX. WT.
1	OH-100	MAIN FRAME - OTH	1,160.0 LBS.
2	OH-110	CENTER -SHANK (1" X 3" X 35" LG.)	23.0 LBS.
3	CS58234-5	BOLT - 5/8" NC. X 2 3/4" LG. GR. 5	N/A
4	LW58	LOCK WASHER - 5/8"	N/A
5	N58	NUT - 5/8"	N/A
6	SWP-8	SWEEP -8" (OH-112)	1.7 LBS.
7	OH-116	AXLE CLAMP - INNER	2.3 LBS.
8	OH-117	AXLE CLAMP - OUTER	4.3 LBS.
9	ON-1613-B	GREASE ZERK	N/A
10	CS34214-5	BOLT - 3/4" NC. X 2 1/4" LG. GR. 5	N/A
11	LW34	LOCK WASHER - 3/4"	N/A
12	N34	NUT - 3/4"	N/A
13	OH-154	PIN - ANGLE SET	0.9 LBS.
14	1641	GREASE ZERK	0.1 LBS.



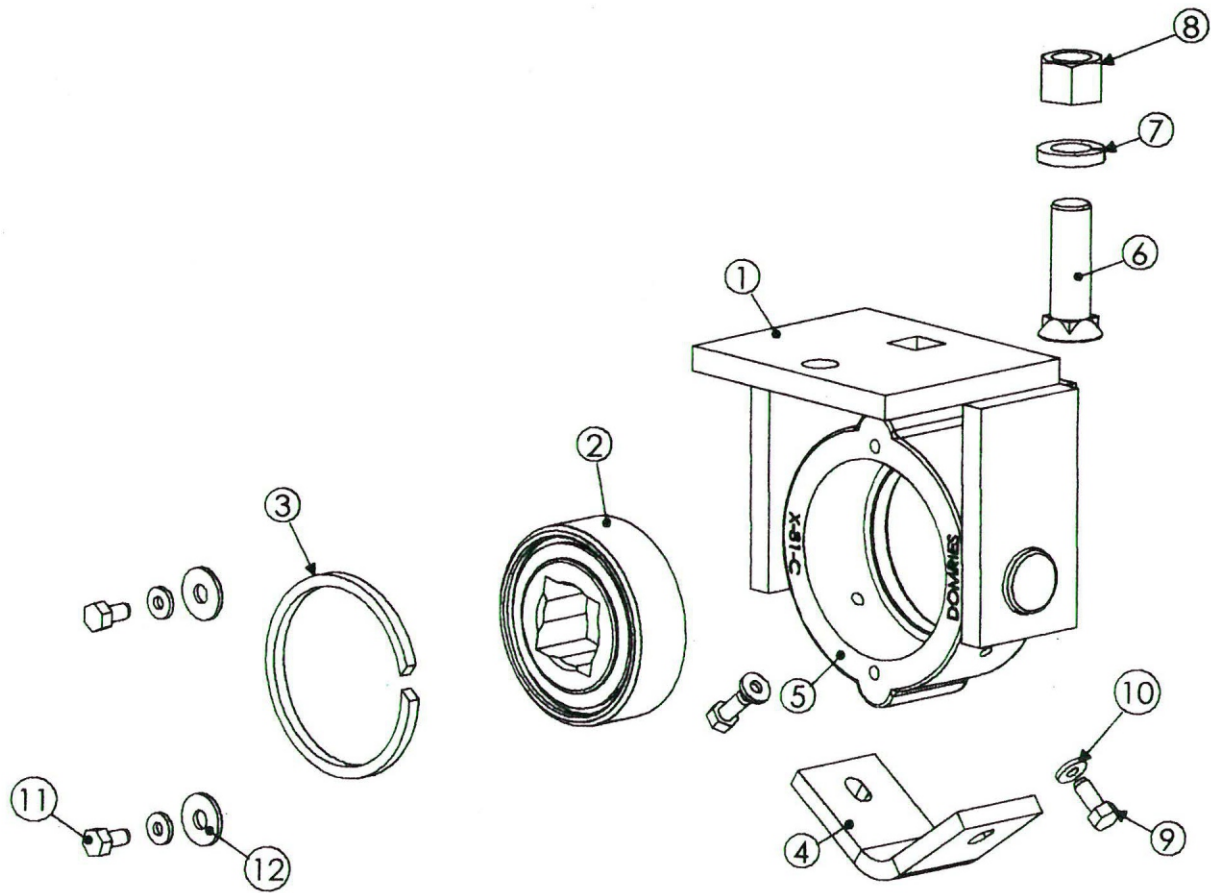
SPINDLE ASSEMBLY

REF#	PART #	DESCRIPTION	WT/LB.
1	DSH-302	HUB	10.0 LBS.
2	DSH-303	BEARING CUP, OUTER	0.1 LBS.
3	DSH-304	BEARING CONE, OUTER	0.3 LBS.
4	DSH-307	INNER SEAL	0.1 LBS.
5	DSH-305	BEARING CUP, INNER	0.2 LBS.
6	DSH-306	BEARING CONE, INNER	0.4 LBS.
7	DSH-308	OUTER SEAL	0.1 LBS.
8	DSH-309	TUBING SLEEVE	0.3 LBS.
9	DSH-310	CLAMP ASSY.	0.3 LBS.
10	DSH-312-S	SLIP IN SPINDLE	9.0 LBS.
11	DSH-313	SLOTTED NUT	0.1 LBS.
12	DSH-314	SPINDLE WASHER	0.01 LBS.
13	DSH-316	DUST CAP	0.2 LBS.
14	DSH-318	LUG BOLT - (1/2" NF X 1" LG.)	0.1 LBS.
15	JJ-19	WHEEL-15 X 6, 6 (1/2)	23.0 LBS.
16	JJ-20	TIRE - 7.60-15, RIB 6 PLY	24.0 LBS.



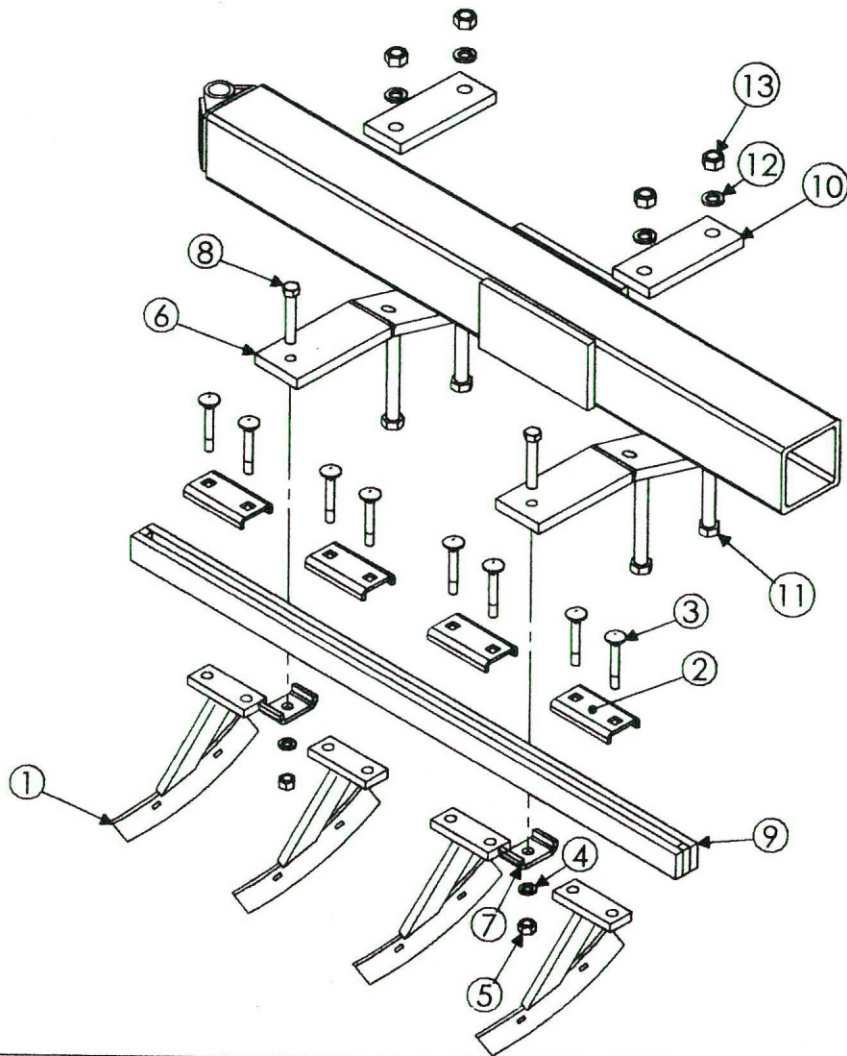
GANG FRAMES

REF. #	PART #	DESCRIPTION	APPROX. WT.
1	OH-157	FRONT TUBE L & R, 7 BLADE	N/A
	OH-161	FRONT TUBE L & R, 8 BLADE	N/A
	OH-162	FRONT TUBE L & R, 9 BLADE	N/A
	OH-163	FRONT TUBE L & R, 10 BLADE	N/A
	OH-159	FRONT TUBE L & R, 11 BLADE	N/A
	2	OH-158	REAR TUBE L & R, 7 BLADE
OH-165		REAR TUBE L & R, 8 BLADE	N/A
OH-166		REAR TUBE L & R, 9 BLADE	N/A
OH-170		REAR TUBE L & R, 10 BLADE	N/A
OH-173		REAR TUBE L & R, 11 BLADE	N/A
3		CS1612-5	BOLT - 1" NC. X 6" LG. GR. 5
4	LN1	LOCK NUT - 1"	N/A
5	OH-155	RISER - BRG. MTG. OUTSIDE	17.7 LBS.
6	OH-156	RISER - BRG. MTG. INSIDE	17.6 LBS.
7	CS582-5	BOLT - 5/8" NC. X 2" LG. GR. 5	N/A
8	OH-160	CLAMP - RISER	N/A
9	CS586-5	BOLT - 5/8" NC. X 6" LG. GR. 5	N/A
10	LW58	LOCK WASHER - 5/8"	N/A
11	N58	NUT - 5/8"	N/A



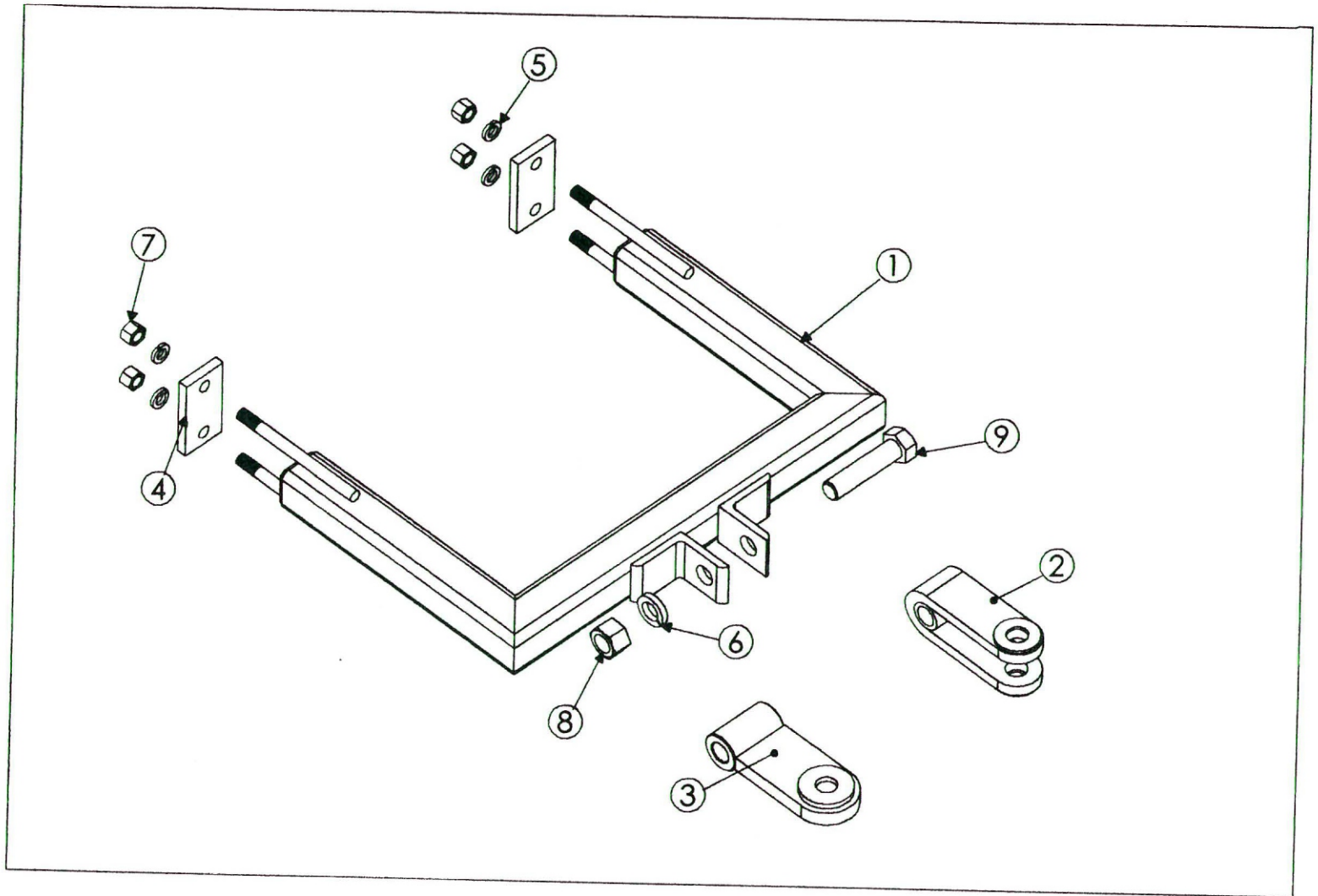
X-80-A-KIT

REF#	PART #	DESCRIPTION	WT/LB.
1	X-81	BEARING HOUSING WELDMENT	12.0 LBS.
2	X-85	BEARING 1 1/2" SQ.	2.0 LBS.
3	X-86	STOP RING	0.2 LBS.
4	K-88	WEAR PLATE	2.0 LBS.
5	X-81-C	BEARING HOUSING CASTING ONLY	5.8 LBS.
6	PB34214-8	PLOW BOLT - 3/4" NC. X 2 1/4" LG. GR. 8	N/A
7	LW34	LOCK WASHER - 3/4"	N/A
8	N34	NUT-3/4"	N/A
9	CS51634-5	BOLT - 5/16" NC. X 3/4" LG. GR - 5	N/A
10	FW14	FLAT WASHER - 1/4"	N/A
11	CS51658-5	BOLT - 5/16" NC. X 5/8" LG. GR - 5	N/A
12	FW38	FLAT WASHER - 1/4"	N/A



OTH-REAR CLEANER SET

REF. #	PART #	DESCRIPTION	APPROX. WT.
1	OHCP-25	CLEANER ARM - LEFT FRONT OR RIGHT REAR	N/A
	OHCP-26	CLEANER ARM - RIGHT FRONT OR LEFT REAR	N/A
2	WOC-110	CLAMP - CLEANER ARM	N/A
3	CB123-5	CARRIAGE BOLT - 1/2" NC. X 3" LG. GR. 5	N/A
4	LW12	LOCK WASHER - 1/2"	N/A
5	N12	NUT - 1/2"	N/A
6	OHCP-300	BRACKET - BAR SUPPORT	N/A
7	JCP28	CLIP	N/A
8	CS123-5	BOLT - 1/2" NC. X 3" LG. GR. 5	N/A
9	OHCP-78	CLEANER - 7 BLD. REAR	N/A
	OHCP-89	CLEANER - 8 BLD. REAR	N/A
	OHCP-90	CLEANER - 9 BLD. REAR	N/A
	OHCP-101	CLEANER - 10 BLD. REAR	N/A
	OHCP-110	CLEANER - 11 BLD. REAR	N/A
10	OH-160	CLAMP - CLEANER ARM	N/A
11	CS586-5	BOLT - 5/8" NC. X 6" LG. GR. 5	N/A
12	LW58	LOCK WASHER - 5/8"	N/A
13	N58	NUT - 5/8"	N/A



UTILITY HITCH

REF#	PART #	DESCRIPTION	WT/LB.
1	OH-UH	UTILITY HITCH SINGLE EAR TYPE	N/A
2	OH-134	CLEVIS TONGUE	N/A
3	OH-135	SINGLE LIP TONGUE	N/A
4	CLAMP PLATES	COMES WITH UTILITY HITCH	N/A
5	LW 34	LOCK WASHER - 3/4"	N/A
6	LW 114	LOCK WASHER - 1 1/4"	N/A
7	N34	NUT - 3/4"	N/A
8	N114	NUT - 1 1/4"	N/A
9	CS1146-5	BOLT - 1 1/4" NC. X 6" LG GR. 5	N/A

Domries Enterprises, Inc.

12281 Road 29
Madera, CA 93637



Phone (559) 673-9143

Fax (559) 673-4110

www.domries.com

WARRANTY

Domries warrant's all products of it's manufacture to be free of defects in material and workmanship under normal usage and maintenance for the period of one year from the date of delivery to the original purchaser.

RETURN GOODS

Domries shall have the option of requiring the prepaid return of any parts claimed defective, however, No parts shall be returned without Domries warranty form with good authorized number. Goods shall be returned to such location as shall be designed by Domries.

Domries will at it's option, either repair or replace, F.O.B. Domries factory. Such parts as appear to to Domries upon inspection, to have been defective in materials and/or workmanship. Wearing parts that are determined to be defective are subject to an adjustment based upon useful life.

REPAIRS

Any field or repairs must have the authorized repair number from Domries before any work is done. Claim for warranty must be made with a Domries warranty form and repair number.

Domries will not accept any charged other than its direct Dealer shop labor costs and part required to remedy such parts and/or workmanship at its Dealer place of business. The WARRANTY specifically excludes any charges for delivery, transportation, and/or shipping cost.

If the dealer is requested by the customer to travel or haul the machine to his shop or repair shop for the purpose of performing a warranty obligation or free inspection, it would be for the customers convenience, and the cost of such a trip is to be paid by the customer. Any arrangement whereby the Dealer agrees to absorb all or a part of the cost is to be made between the Dealer and the Customer. To be considered a courtesy to the Customer by their Dealer.

LIMITED WARRANTY

Outside purchase equipment and accessories (not of Domries manufacture) are warranted only to the extent of the original manufacturer's warranty to Domries.

Item limited - Hydraulic cylinders and hose - Bearings - Disc Blades - Wheels - Tires - Tubes - Seals.

No Warranty shall be paid by Domries before the part or parts and labor have been paid to Domries by the manufacturer. Domries shall then compensate the dealer or customer.

NO WARRANTY

- (1) New product that has been subjected to operation in excess in recommended capacities, misused, negligence, lack of maintenance or accident or have been altered or repaired in any manner not authorized by Domries.
- (2) Sharp turns while machine is ground void warranty, with the exception of a drag disc.

Domries shall in no event be responsible for any delay or any other consequential or indirect damage in connection with fulfilling any obligation under this WARRANTY.

Domries reserves the right to make change at any time in designs, materials and/or specifications of it's product without becoming liable or obligated in any way to make similar changes in previously manufactured products.

This WARRANTY IS IN LIEU OF ALL OTHER WARRANTIES COVERING DOMRIES PRODUCTS and no other Warranties express or implied are made or authorized by Domries Enterprises, Inc.

This WARRANTY BECAME EFFECTIVE with shipments made on or after August 1st 1998