

SERIES

OF MX-W

Wheel Type

PARTS

Offset Disc

&

Harrow

**OPERATER
MANUAL**

Semi

Stubble Disc

Wing Fold

Domries Enterprises, Inc

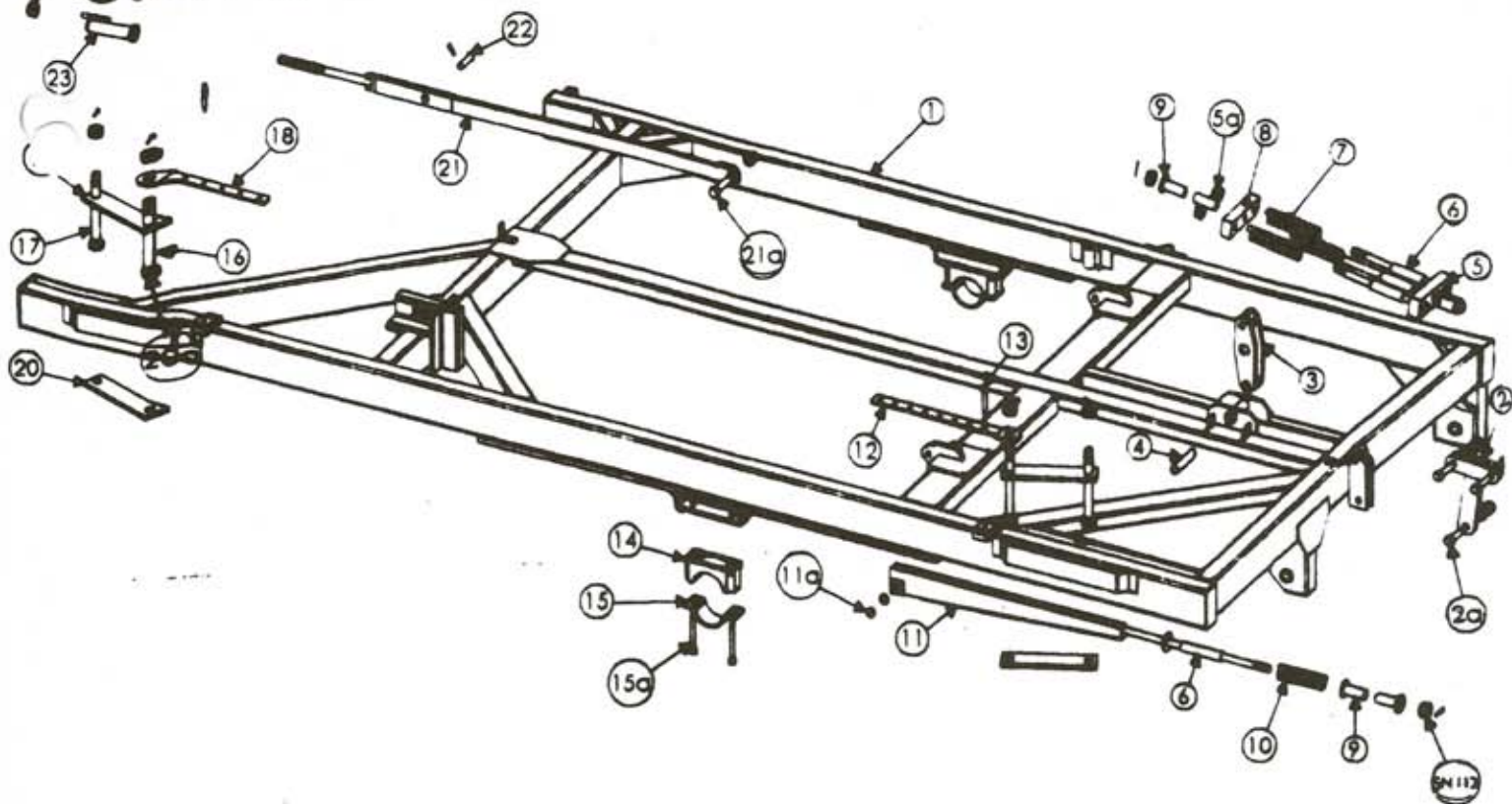
12281 Rd 29

Madera, Ca 93668

Phone#(559) 678-9143 Fax#(559) 673-4110

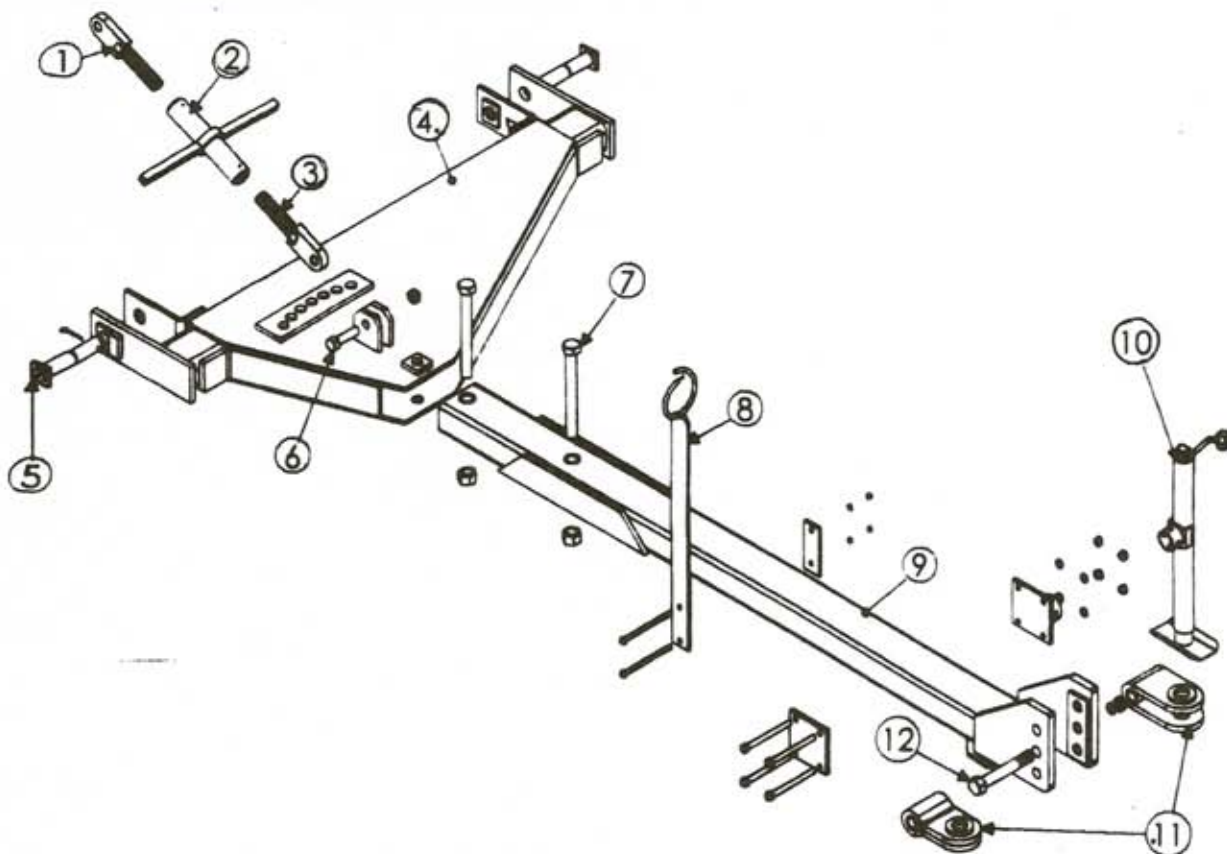
Visit our Web-Site at www.domriesentinc.com

OMX-W-1



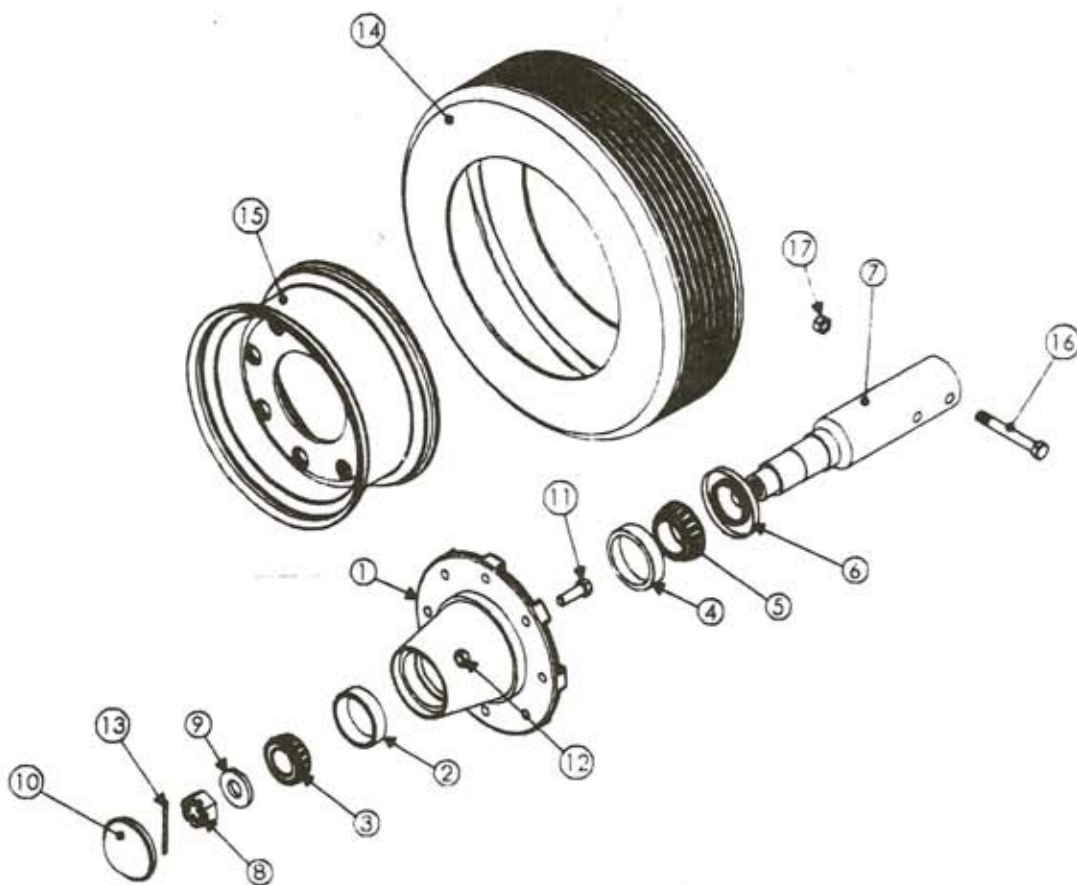
MAIN FRAME ASSEMBLY

REF#	PART #	DESCRIPTION	WT/LB.
1	OMX-W-1	MAIN FRAME - 88" (WING DISC)	.
2	ON-12	HAMMER - LEVELING	28.3 LBS.
2a	CS1312-5	BOLT - 1" X 3 1/2" LG. GR. 5	
	LN1	LOCK NUT - 1"	
3	ON-18	LEVER - SWIVEL	28.3 LBS.
4	ON-134	PIN - ROCKER	4.0 LBS
5	ONX-13	LEVELING ROD - DUAL SPRING	64.0 LBS
5a	SN-112	SLOTTED NUT - 1 1/2" COTTER PIN	
6	ON-150	TUBE CRUSH SPRING	2.5 LBS.
7	OX-14 (ON -14)	LEVELING SPRING	7.0 LBS.
8	OX-50	BLOCK - RETAINER	20.0 LBS.
9	OX-15	TUBE FLANGE	1.8 LBS.



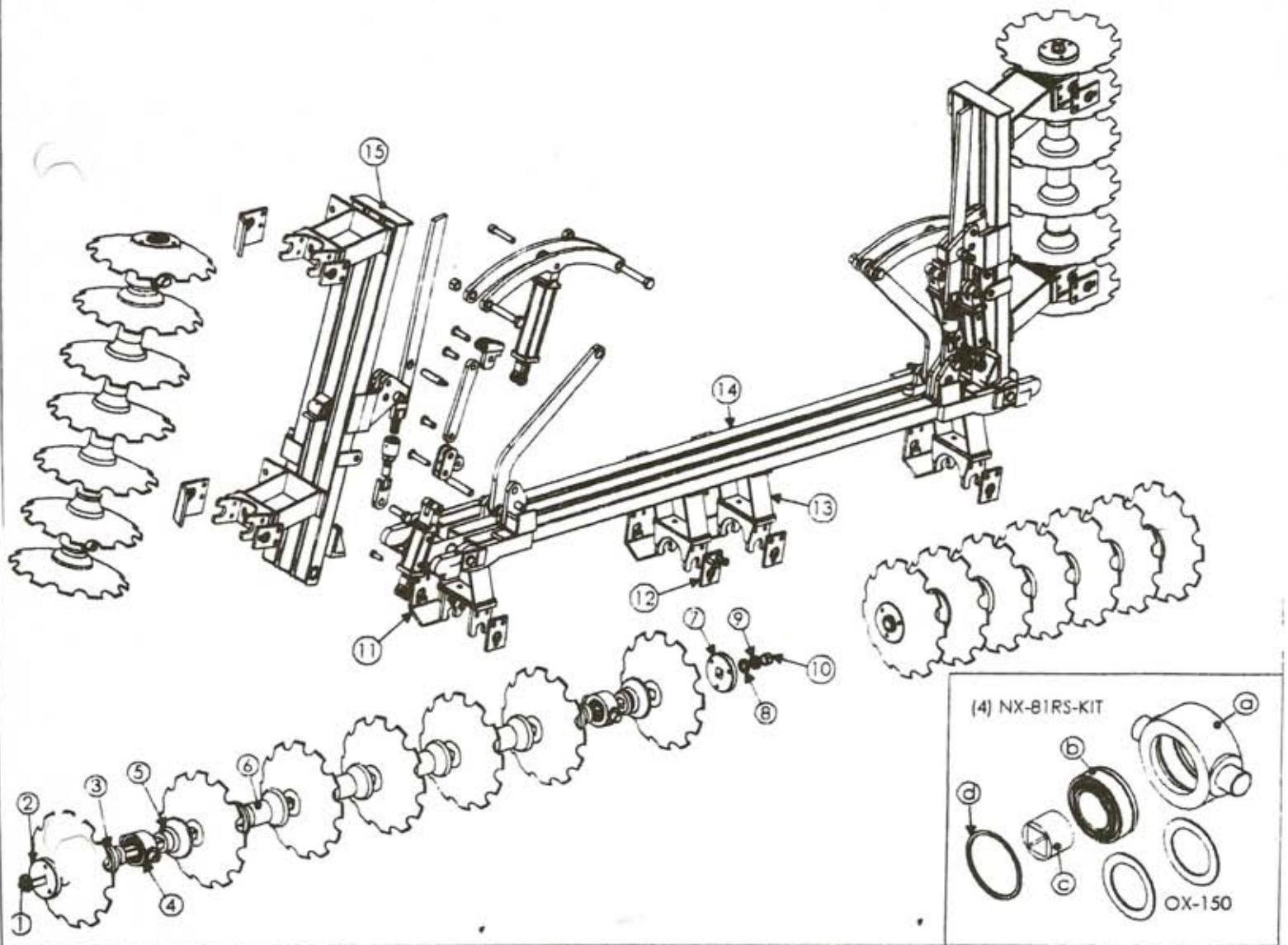
HITCH ASSEMBLY

REF#	PART #	DESCRIPTION	WT/LB.
1	OX-9	BOLT - TURNBUCKLE, R.H. THRD.	6.5 LBS.
2	OX-10	BODY - TURNBUCKLE	14.75 LBS.
3	OX-11	BOLT - TURNBUCKLE, L.H. THRD.	6.5 LBS.
4	OM-5	CROSS MEMBER - HITCH	490.0 LBS.
5	ON-61	PIN - HITCH	5.5 LBS.
6	CS1312-5 LN1	BOLT - 1" X 3 1/2" LG. GR. 5 LOCK NUT - 1"	1.1 LBS. .1 LBS.
7	8C11412-8 N114	BOLT - 1 1/4" X 12" LG. GR. 8 NUT-1 1/4"	
8	ON-130 CS12712-5 LW12 N12	HOSE GUIDE W/ CLAMP BOLT - 1/2" X 7 1/2" LG. GR. 5 LOCK WASHER - 1/2" NUT-1/2"	12 LBS.
9	OX-7ME	DRAW BAR - HITCH, HVY.	250 LBS.
10	OX-138 CS588-5 LW58 N58	HITCH JACK -5000 LBS. (INC. MOUNTING PARTS) BOLT - 5/8" X 8" LG. GR. 5 LOCK WASHER - 5/8" NUT - 5/8"	17.0 LBS.
11	OX-8 OX-8C	TONGUE SINGLE, HVY. TONGUE CLEVIS, HVY.	24 LBS. 23.5 LBS.
12	OX-126 LW114 N114	BOLT - HITCH TONGUE LOCK WASHER - 1 1/4" NUT - 1 1/4"	3.7 LBS.



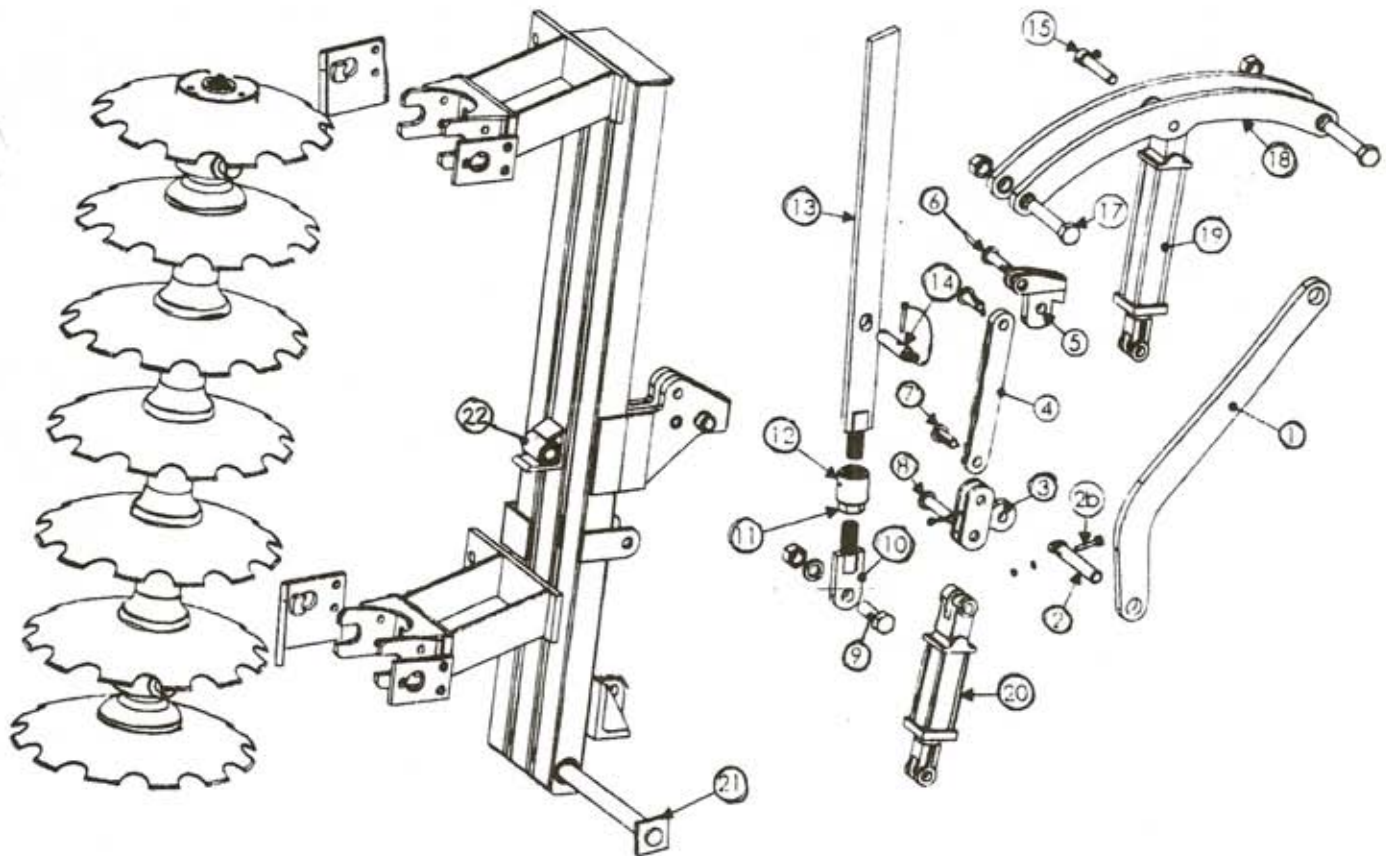
OFMX-W SPINDLE ASSEMBLY

1	RPO-163	HUB W/ CUPS	10.0 LBS.
2	RPO-147	BEARING CUP - OUTER	0.1 LBS.
3	RPO-148	BEARING CONE - OUTER	0.3 LBS.
4	RPO-145	BEARING CUP - INNER	0.2 LBS.
5	RPO-146	BEARING CONE - INNER	0.4 LBS.
6	RPO-144	OUTER SEAL	0.1 LBS.
7	FX-518	SLIP IN SPINDLE	9.0 LBS.
8	SN78F	SLOTTED NUT	0.1 LBS.
9	RPO-159	SPINDLE WASHER	0.01 LBS
10	RPO-151	DUST CAP	0.2 LBS.
11	RPO-168	LUG BOLT - (1/2" NG X 1" LG.)	0.1 LBS.
12	N916-F	NUT 9/16"	N/A
13	CP3162	COTTER PIN 3/16" X 2" LG.	N/A
14	FX-534	TIRE - 7.60-15, RIB 6 PLY.	24.0 LBS.
15	FX-533	WHEEL 15 X 6, 8 (1/2)	23.0 LBS.
16	CS12412-5	BOLT - 1/2" NC. X 4 1/2" GR.	N/A
17	LN-12	LOCK NUT - 1/2"	N/A



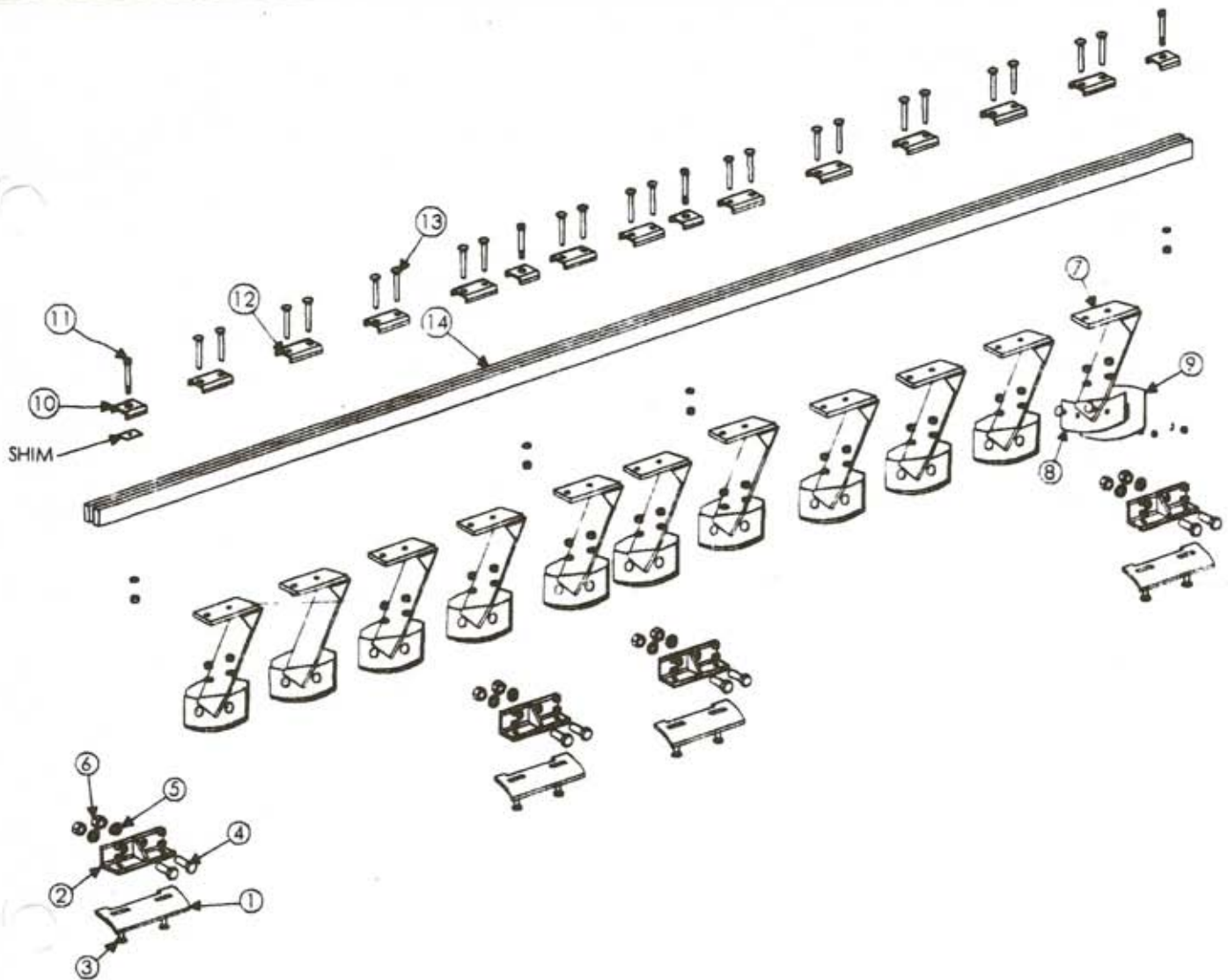
OFMW-X GANG ASSEMBLY

REF#	PART #	DESCRIPTION	WT/LB.
1	NX-101-10 1/2	GANG ROD - 1 3/4" SQ. 4 BLD. 10 1/2" SPC.	42.4 LBS.
	NX-102-10 1/2	GANG ROD - 1 3/4" SQ. 5 BLD. 10 1/2" SPC.	45.2 LBS.
	NX-103-10 1/2	GANG ROD - 1 3/4" SQ. 6 BLD. 10 1/2" SPC.	51.2 LBS.
	NX-104-10 1/2	GANG ROD - 1 3/4" SQ. 7 BLD. 10 1/2" SPC.	60.8 LBS.
	NX-105-10 1/2	GANG ROD - 1 3/4" SQ. 8 BLD. 10 1/2" SPC.	70 LBS.
2	FXSL -106	EXT. WASHER - CCV , 1 3/4" SQ.	17.0 LBS
3	NX-84-10 1/2	HALF SPOOL - CVX, 1 3/4" SQ. 10 1/2" SPC.	17.8 LBS.
4	NX-81RS-KIT	GNG. BRG. ASSY. - 1 3/4" SQ. DELUBE	19.4 LBS.
a	OFNX-81-1 3/4	BRG. HOUSING W/(Z) OX -150 BRG. SHIELDS	15.0 LBS.
b	RPT-502	BEARING GNG.	5.0 LBS.
c	RPT-501 (NX-80)	INSERT - 1 3/4" SQ. X 2" LG.	1.6 LBS.
d	RPT-510	RTANINING RING - GNG. BRG.	0.7 LBS.
5	NX-83	HALF SPOOL - CCV, 1 3/4" SQ. 12" & 10 1/2" SPC.	17.8 LBS.
6	NX-82-10 1/2"	SPACER SPOOL- 1 3/4" SQ. 10 1/2" SPC.	38.2 LBS.



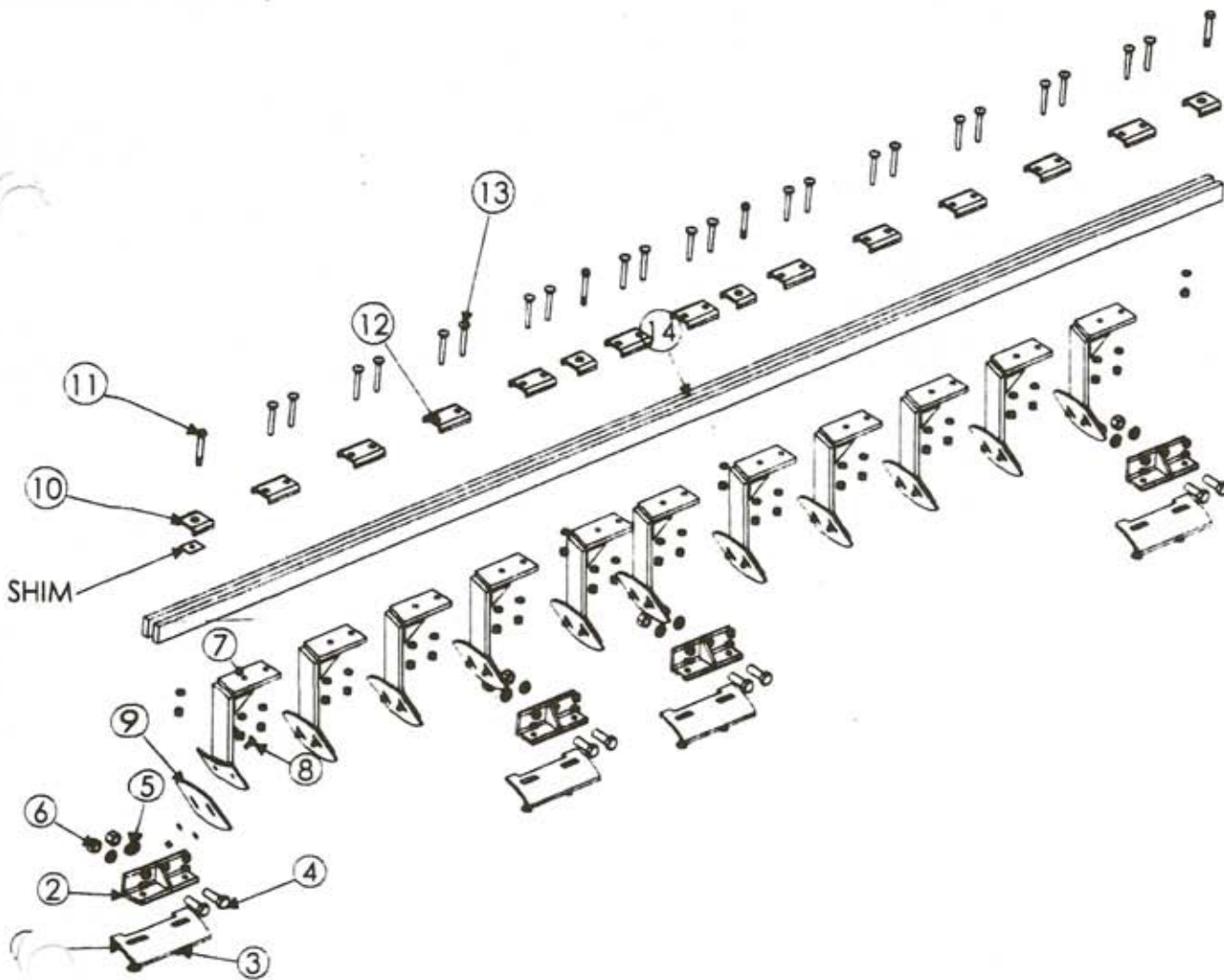
GANG WING ASSEMBLY

REF#	PART #	DESCRIPTION	WT/LB.
1	MW1-24	CONTROL ARM	36.5 LBS.
2	MW1-28	PIN LOCK DOWN	2.5 LBS.
2b	CS38212-5	BOLT - 3/8" NC. X 2 1/2" LG. GR. 5	
	LW38	LOCK WASHER - 3/8"	
	N38	NUT - 3/8"	
3	MW1-33	PIVOT - BRACKET - LOCK DOWN	9.0 LBS.
4	MW1-32	LINK - LOCK DOWN	10.5 LBS.
5	MW1-29	LOCK DOWN TOGGLE	7.5 LBS.
6	MW1-35	PIN - LOCK DOWN	1.0 LBS.
	CP5163	COTTER PIN - 5/16" X 3" LG.	
7	MW1-34	PIN - LOCK DOWN	1.0 LBS.
	CP5163	COTTER PIN - 5/16" X 3" LG.	
8	MW1-36	PIN-LOCK DOWN	1.0 LBS.
	CP5163	COTTER PIN - 5/16" X 3" LG.	



CLEANER ASSEMBLY, FRONT

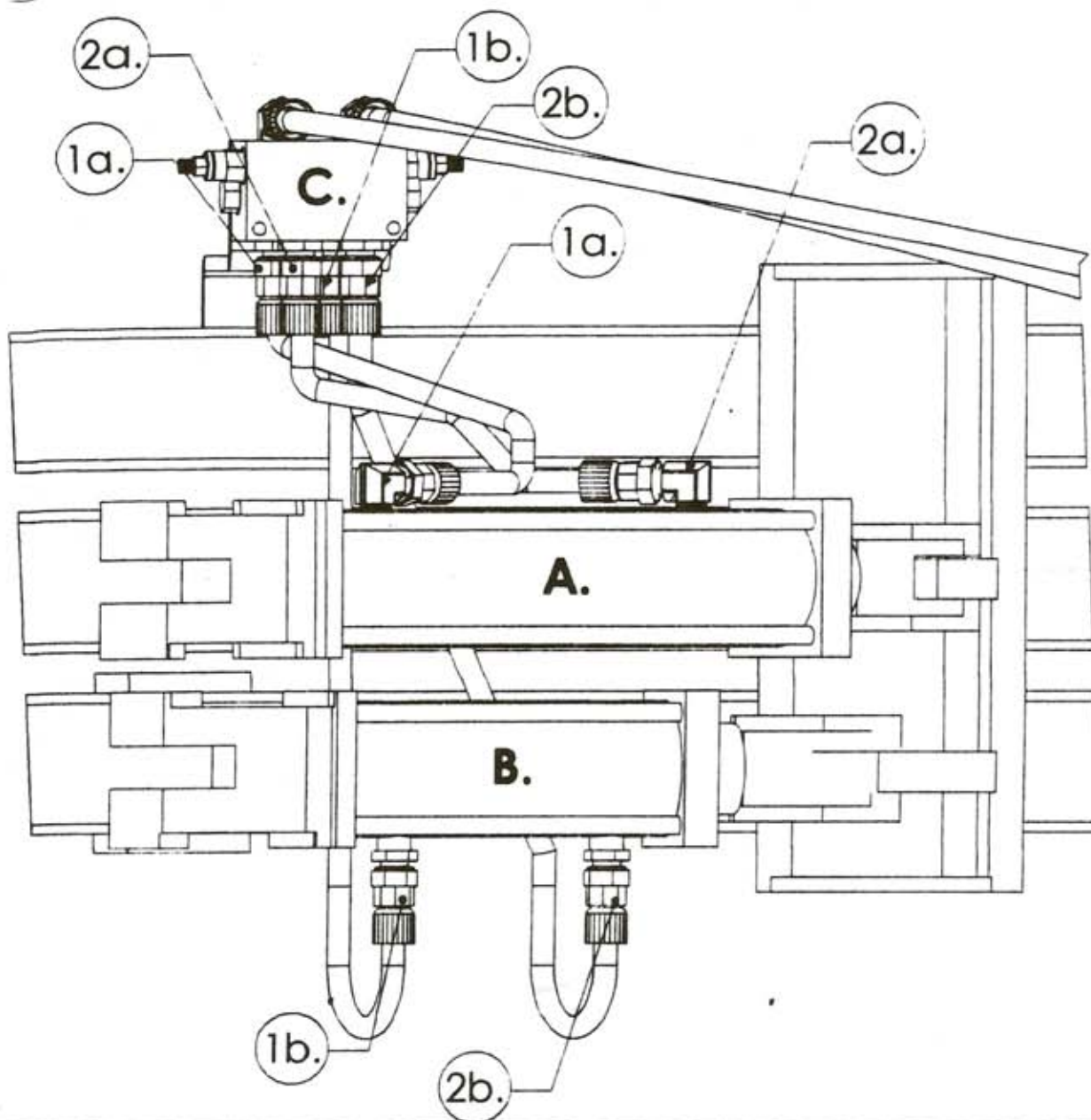
REF#	PART #	DESCRIPTION	WT/LB.
1	FXSL-230	THRASH PLATE - 10 1/2" SPACING	5.8 LBS.
2	FXSL-229	HOLDER - THRASH PLATE	4.0 LBS.
3	CB12112-5	CARRIAGE BOLT - 1/2" NC. X 1 1/2" LG. GR. 5	0.2 LBS.
	LW12	LOCK WASHER - 1/2"	0.1 LBS.
	N12	NUT - 1/2"	0.1 LBS.
4	CS58214-5	BOLT- 5/8" NC. X 2 1/4" LG. GR.5	0.3 LBS.
5	LW58	LOCK WASHER - 5/8"	0.1 LBS.
6	N58	NUT - 5/8"	0.1 LBS.
7	OFHX-300-F	CLEANER ARM - FRONT (WHEN USING 28" DISC BLADES ONLY)	10.0 LBS.
8	CB381-5	CARRIAGE BOLT - 3/8" NC. X 1" LG. GR. 5	0.1 LBS.
	LW38	LOCK WASHER - 3/8"	0.1 LBS.
	N38	NUT 3/8"	0.1 LBS.
9	OF-309	BLADE CLEANER	2.0 LBS.



CLEANER ASSEMBLY, REAR

REF#	PART #	DESCRIPTION	WT/LB.
1	FXSL-230	THRASH PLATE - 10 1/2" SPACING	5.8 LBS.
2	FXSL-229	HOLDER - THRASH PLATE	4.0 LBS.
3	CB12112-5	CARRIAGE BOLT - 1/2" NC. X 1 1/2" LG. GR. 5	0.2 LBS.
	LW12	LOCK WASHER - 1/2"	0.1 LBS.
	N12	NUT - 1/2"	0.1 LBS.
4	CS58214-5	BOLT - 5/8" NC. X 2 1/4" LG. GR.5	0.3 LBS.
5	LW58	LOCK WASHER - 5/8"	0.1 LBS.
6	N58	NUT - 5/8"	0.1 LBS.
7	OFHX-300-F	CLEANER ARM - FRONT (WHEN USING 28" DISC BLADES ONLY)	10.0 LBS.
8	CB381-5	CARRIAGE BOLT - 3/8" NC. X 1 " LG. GR. 5	0.1 LBS.
	LW38	LOCK WASHER - 3/8"	0.1 LBS.
	N38	NUT 3/8"	0.1 LBS.
	OF-309	BLADE CLEANER	2.0 LBS.

REF#	PART #	DESCRIPTION	WT/LB.
9	CB381-5	CARRIGE BOLT - 3/8" NC X 1" LG GR 5	
	LW 38	LOCK WASHER - 3/8"	
	N38	NUT - 3/8"	
10	OF-307-W	CAP - CLEANER BAR W/SIM ,ON CENTER GANGS ONLY	
	OF-307	CAP - CLEANER BAR - STANDARD	
11	CS34412-5	BOLT - 3/4" NC X 4 1/2" LG GR 5	
	LW34	LOCK WASHER - 3/4"	
	N34	NUT - 3/4"	
12	OF-305	CAP CLEANER ARM	0.5 LBS
13	CB12312-5	CARRIGE BOLT - 1.2" NC X 3 1/2" LG GR 5	
	LW12	LOCK WASHER - 1/2"	
	N12	NUT - 1/2"	
14	MWC-1	CLEANER BAR - CENTER GANG (WING DISC) 133" LG	
	MWC-4	CLEANER BAR - 4 BLADE , 9" SPC 39" LG	
	MWC-5	CLEANER BAR - 5 BLADE , 9" SPC 48" LG	
	MWC-6	CLEANER BAR - 6 BLADE , 9" SPC 57" LG	
	MWC-7	CLEANER BAR - 7 BLADE , 9" SPC 66" LG	
	MWC-8	CLEANER BAR - 8 BLADE , 9" SPC 76" LG	
	MWC-9	CLEANER BAR - 9 BLADE , 9" SPC 85" LG	
	OMC-4	CLEANER BAR - 4 BLADE , 10 1/2" SPC 44" LG	
	ONC-5	CLEANER BAR - 5 BLADE , 10 1/2" SPC 55" LG	
	OMC-6	CLEANER BAR - 6 BLADE , 10 1/2" SPC 66" LG	
	OMC-7	CLEANER BAR - 7 BLADE , 10 1/2" SPC 77" LG	
	OMC-8	CLEANER BAR - 8 BLADE , 10 1/2" SPC 88" LG	
OPTIONAL CLEANER ASSY.			
	OFH-300A-F	CLEANER ASSY. - HVY DTY	
	OFH-300A-R	CLEANER ASSY. - HVY DTY	
	OFHX-300A-F	CLEANER ASSY. - HVY DTY (USE W/28" D BLD)	
	OFHX-300A-R	CLEANER ASSY. - HVY DTY (USE W/28" D BLD)	



REF#	PART #	DESCRIPTION	WT/LB.
A.	JJ-90	HYD. CYLINDER 3" DIA. X 12" STRK. (W/PINS)	
1a.	HYDRAULIC HOSE	CONNECT BOTTOM LEFT OF SEQUENCING VALVE C. TO LEFT SIDE OF HYRAULIC A.	
2a.	HYDRAULIC HOSE	CONNECT TOP LEFT OF SEQUENCING VALVE C. TO RIGHT SIDE OF HYRAULIC A	
B.	MW-1-37	HYD. CYLINDER 2 1/4" DIA. X 4" STRK. (LOCK CYL.)	
1b.	HYDRAULIC HOSE	CONNECT BOTTOM RIGHT OF SEQUENCING VALVE C. TO LEFT SIDE OF HYRAULIC B.	
2b.	HYDRAULIC HOSE	CONNECT TOP RIGHT OF SEQUENCING VALVE C. TO RIGHT OF HYRAULIC B.	
C.	MW1-97	SEQUENCING VALVE	

1.



FPT-8

2.



FP-FP90-8-8

3.



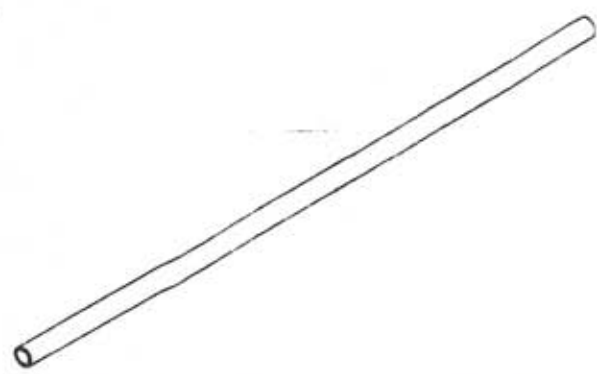
PF800-S

4.



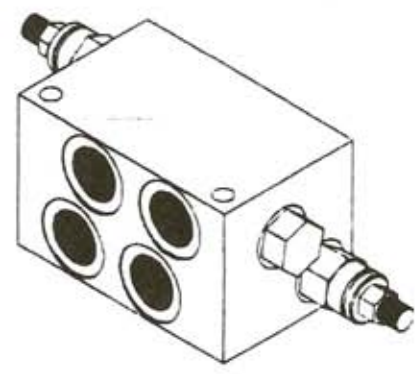
FP-FPX-8-8

5.



MW1-38 THROUGH MW1-49

6.



MW1-97

HYDRAULIC ATTACHMENTS

REF#	PART #	DESCRIPTION	WT/LB.
1	FPT-8	FEMALE PIPE TEE - 1/2" FP - 1/2" FP - 1/2" FP	0.5 LBS.
2	FP-FP90-8-8	FEMALE PIPE - FEMALE PIPE 90	0.5 LBS.
3	PF800-S	FLOW VALVE CONTROL	1.5 LBS.
4	FP-FPX-8-8	FEMALE PIPE - FEMALE PIPE SWIVEL - STRAIGHT	0.5 LBS.
5	MW1-38	HYDRAULIC PIPE - WING FOLD 17 1/2" LG.	
	MW1-39	HYDRAULIC PIPE - WING FOLD 19 1/2" LG.	
	MW1-40	HYDRAULIC PIPE - WING FOLD 20" LG.	
	MW1-41	HYDRAULIC PIPE - WING FOLD 23" LG.	
	MW1-42	HYDRAULIC PIPE - WING FOLD 34 1/2" LG.	
	MW1-43	HYDRAULIC PIPE - WING FOLD 38 1/2" LG.	
	MW1-44	HYDRAULIC PIPE - WING FOLD 37 1/2" LG.	
	MW1-45	HYDRAULIC PIPE - WING FOLD 42" LG.	
	MW1-46	HYDRAULIC PIPE - WING FOLD 45" LG.	
	MW1-47	HYDRAULIC PIPE - WING FOLD 74" LG.	
	MW1-48	HYDRAULIC PIPE - WING FOLD 84" LG.	
MW1-49	HYDRAULIC PIPE - WING FOLD 111" LG.		
6	MW1-97	SEQUENCING VALVE	