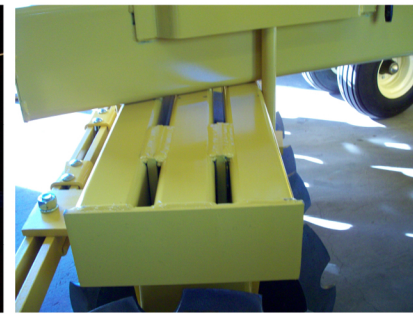




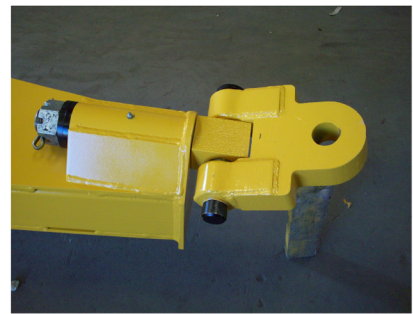
HITCH A series of holes allows fast offset adjustment. Front mounted turnbuckle adjusts machine level to tractor hitch



DEPTH CONTROL Threaded crank gives fine tuned depth of cut settings. A transport safety pin is also part of control unit.



GANG BEAMS Three 4" x 6" heavy wall steel tires.



TONGUE Single lip is standard, double lip and tongue pivot drop optional.



HITCH The long slender design of the hitch allows shorter turns behind dual wheel and track type tractors. The heavy wall tubing planted on both sides develops a super strong hitch needed for big H.P. tractors.



DOUBLE LOCK NUTS For maximum gang bolt security.

SPECIFICATIONS

OFX

MODEL ORDER NO.	A.S.A.E. WIDTH OF CUT	NO. OF BLADES	NO. OF BEARINGS	WORKING WEIGHTS			***APPROX. DRAWBAR POWER			APPROX. EXPORT CUBES	
				MACHINE	PER BLADE	PER FT. OF CUT	4 M.P.H.	6 M.P.H.	LBS. PULL	CF	CM
OFX2022	11'6"	20	8	12270	593	1067	118	178	11040	289	8.1
OFX 2222	12'8"	22	8	13329	601	1045	130	196	11620	289	8.2
OFX 2422	13'9"	24	8	13844	577	1007	141	213	12680	327	9.3
OFX 2622	14'10"	26	10	14767	568	996	152	229	13740	366	10.4
OFX 2822	16'0"	28	12	15504	554	969	164	247	14800	404	11.4
OFX3022	17'1"	30	12	15915	531	932	175	264	15850	443	12.5
OFX 3222	18'2"	32	12	16446	514	905	186	281	16900	481	13.6
OFX 3422	19'3"	34	12	17008	500	882	198	298	18000	527	14.9
OFX 3622	20'5"	36	13	18047	501	884	210	316	19020	573	16.2

* COMPUTED WITH 32 X 3/8 NOTCHED DISC BLADES, BLADE CLEANERS, HYD CYL., HOSES AND TIRES.

**DRAWBAR POWER HAS BEEN COMPUTED TO HIT AN AVERAGE IN THE SPECTRUM OF SOIL CONDITIONS, OPERATING SPEED, CUTTING ANGLE AND WEIGHT ADDED TO MACHINE.

DESIGN MATERIAL AND/OR SPECIFICATIONS ARE SUBJECT TO CHANGE WITHOUT NOTICE AND WITHOUT LIABILITY THEREFORE.



DOMRIES ENTERPRISES, INC.
12281 Road 29
Madera, California 93638
Phone (559) 673-9143 .FAX (559) 673-4110
Visit our website @ <http://www.domries.com>

SOLD BY



CUTTING WIDTHS
11'6"
TO
20'5"

OFX
SERIES

DOMRIES ENTERPRISES, INC.
12281 Road 29
Madera, California
Phone (559) 673-9143
Fax (559) 673-4110
<http://www.domries.com>



The Deluxe Disc

Domries OFX STUBBLE DISC



STANDARD FEATURES

BEARINGS GREASABLE BALL BEARINGS IN HEAVY CAST FRAME. SELF ALIGNING. TRIPLE LIP SEAL.

GANG RODS 2 1/4" SQUARE HI CARBON STEEL
DISC BLADES HI QUALITY BLADES WITH CROSS ROLLED STEEL MFG. 32" X 3/8 IS STD. EQUIPMENT. 36" BLADES ARE OPTIONAL AS WELL THICKER AND OR NOTCHED BLADES. DURA FACED BLADES GIVE UP TO THREE TIMES NORMAL WEAR AND ARE AVAILABLE IN ALL SIZES AND COMBINATIONS.

BLADE SPACING 14" WITH HEAVY CAST SPACER SPOOLS.

DUAL WHEELS 16" X 8" X 8 BOLT IS FURNISHED STD.

TIRES 12.5 L X 16 X 8 PL YARE STD. EQUIPMENT.

HYDRAULICS DUAL 4" BORE 16" STROKE CYLINDERS. HOSES TO TRACTOR INCLUDED.

FRAME 6" X 10" STEEL TUBE BRACED AND ELECTRIC WELDED

GANG BEAMS THREE 4" X 6" HEAVY WALL STEEL TUBES PROVIDE THE STRENGTH NEEDED FOR UP TO 36" BLADES.

LEVELING LINKAGE KEEPS DISC LEVEL IN ALL STAGES FROM DISCING TO TRANSPORT. EASY ADJUSTMENT TO TRACTOR HITCH HEIGHT IS MADE WITH TOP LINK AT FRONT OF FRAME. ALL SETTINGS ARE CUSHIONED FROM SHOCK BY TWO HEAVY COMPRESSION SPRINGS.

TRANSPORT SAFETY A HEAVY CROSS PIN TAKES ALL OF THE MACHINE WEIGHT OFF OF THE HYDRAULIC CYLINDER WHEN TRANSPORTING. DOMRIES SCISSOR LINKAGE ALLOWS FULL FREEDOM OF CYLINDER MOVEMENT WITHOUT DAMAGE TO THE DEPTH CONTROL WHEN NOT IN USE THE PIN HAS A STORAGE RACK.

GANG ANGLE SETTING ANGLES FROM 16° TO 30° WITH NON SLIP SET BARS AND DROP PINS.

HITCH THE LONG TAPERED TUBING AND PLATE WELDMENT OFFERS THE ULTIMATE IN STRENGTH AND PERMITS SHORTER TURNS BEHIND DUAL WHEEL TRACTORS.

TONGUE A SINGLE LIP IS STD. A "U" TONGUE IS AT YOUR OPTION.

TONGUE JACK STD. EQUIPMENT

TAPERED DISCS TWO DECREASING DIAMETER BLADES ON RT. REAR IS OPTIONAL. BOLT ON FURROW FILLER ALSO AND OPTION.

OPTIONS

- WEAR PLATES
- BLADE CLEANERS
- BLADE SIZES AND THICKNESSES
- BOLT ON FURROW FILLER
- HOSE KIT



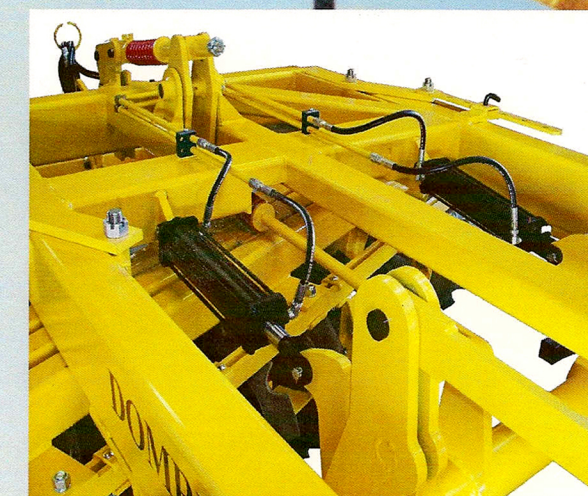
LEVELING LINKAGE IS PROTECTED AGAINST SHOCK WITH A HEAVY COMPRESSION SPRING. **DRAFT TWO LEVEL HITCH** HOOKUP.



SET BARS USING TRACTOR POWER TO MOVE GANG BEAMS DROP SET PIN AT ANY ANGLE 16° TO 30° HANGER BOLTS GLIDE IN TWO CHANNELS ALLOWING AN EASY NON SLIP GANG ANGLE ADJUSTMENTS.



OPTIONAL TRUNION MOUNTED TAPERED ROLLER BEARING



VIEW OF THE DOMRIES HYDRAULIC LIFT SYSTEM. DEPTH CONTROL RISER AND LEVELING UNIT CAM SHOWN IS THE UNIQUE DOMRIES SCISSOR JOINT FOR THE CRANK TYPE DEPTH CONTROL AND WHICH ALSO PROTECTS AGAINST CYLINDER DAMAGE.